



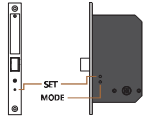
# FINGERPRINT DOOR LOCK

## PRODUCT SPECIFICATION

Working Current	180~280mA	Working Voltage	4.5V
Working Temp	0°C ~ 40°C	Working Humidity	20%~80%

## BUTTON INTRODUCTION

- **BUTTON MODE :** Mode switch button (short press button to switch mode)
- **BUTTON SET :** Set / delete manager fingerprint



## APPLICATION MODE

\*\*\*Any fingerprint can lock/unlock the door if there is not any manager fingerprint added\*\*\*

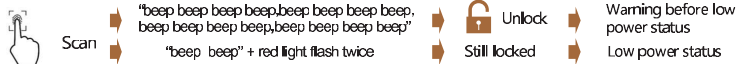
- **MANAGER :**  
Lock is able to store 10 manager fingerprints. Manager fingerprint can add or delete user fingerprint. A manager is also able to switch to different manager finger.
- **USER :**  
Lock is able to store 10 user fingerprints under auto & manual close mode. Only 1 fingerprint can be stored under public mode.

## MODE INTRODUCTION

\*\*The mode can be switched by pushing and releasing the mode button. The beep(s) that it makes after pressing the mode button determines the mode it is in.\*\*

- **MANUAL-LOCK MODE ("BEEP" SOUND) :**  
Door will stay unlock until the user scans the fingerprint again.
- **AUTO-LOCK MODE ("BEEP BEEP" SOUND) :**  
The door will automatically lock after 6 seconds.
- **PUBLIC LOCKER MODE (ONE-TIME USE MODE "BEEP BEEP BEEP" SOUND) :**  
The door will stay unlock until a new user's fingerprint set up is completed. Once the set up is completed, the door will be locked and only that user's fingerprint will reopen the lock. Once the current user opens the door, that user's fingerprint is deleted and no longer stored. The lock is now ready for a new user to set up their print.

## LOW VOLTAGE ALARM



### ⚠ WARNING :

1. Please test the lock to make sure it is working before you shut the door.
2. Please use 3 new AAA alkaline batteries.
3. Voltage input can never be over 6 Volts.
4. Please make sure your finger is clean and free of water or grease. Otherwise, the lock may not be able to read your print correctly.
5. This lock is not water proof. Please do not allow water to get on any portion of the lock body on sensor area. Circuit damage will occur and the lock may not operate correctly.

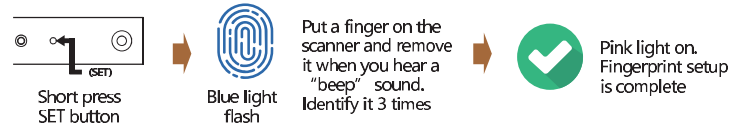
20250923M



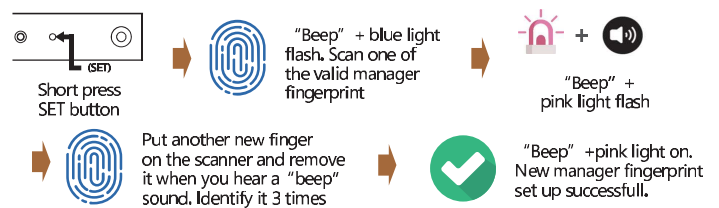
## MANAGER INSTRUCTION

\*\*Please keep your fingers clean when you use the lock\*\*

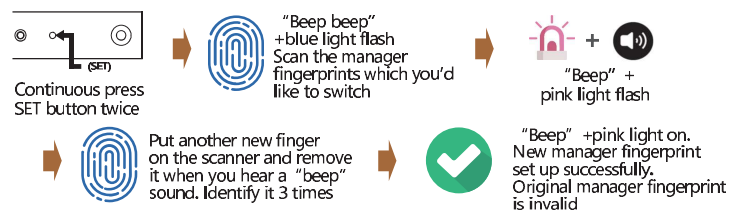
### ● SET UP THE FIRST MANAGER FINGERPRINT



### ● ADD NEW MANAGER FINGERPRINT



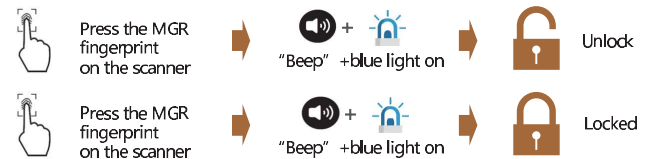
### ● SWITCH MANAGER FINGERPRINT



### ● DELETE A MANAGER



### ● MANAGER FINGERPRINT UNLOCK & LOCK

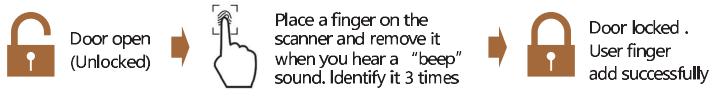




### USER INSTRUCTION (PUBLIC LOCKER MODE)

**\*\*Please keep your fingers clean when you use the lock\*\***

#### ● ADD USER FINGERPRINT AND LOCK



#### ● TO UNLOCK



**In public locker mode, user fingerprint is deleted after the door is opened by manager fingerprint**

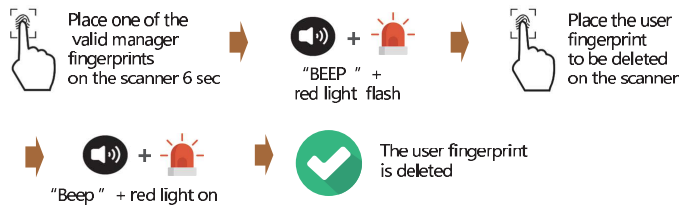


### USER INSTRUCTION (AUTO & MANUAL-CLOSE MODE)

#### ● ADD USER FINGERPRINT



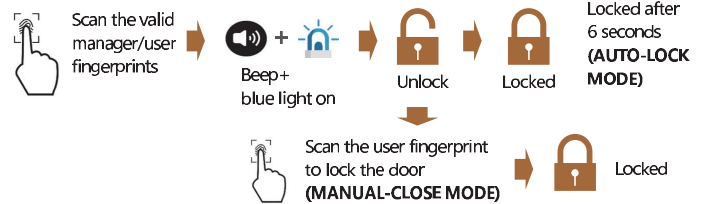
#### ● DELETE INDIVIDUAL USER FINGERPRINT



#### ● DELETE ALL USER FINGERPRINTS



#### ● MANAGER/USER FINGERPRINT UNLOCK & LOCK



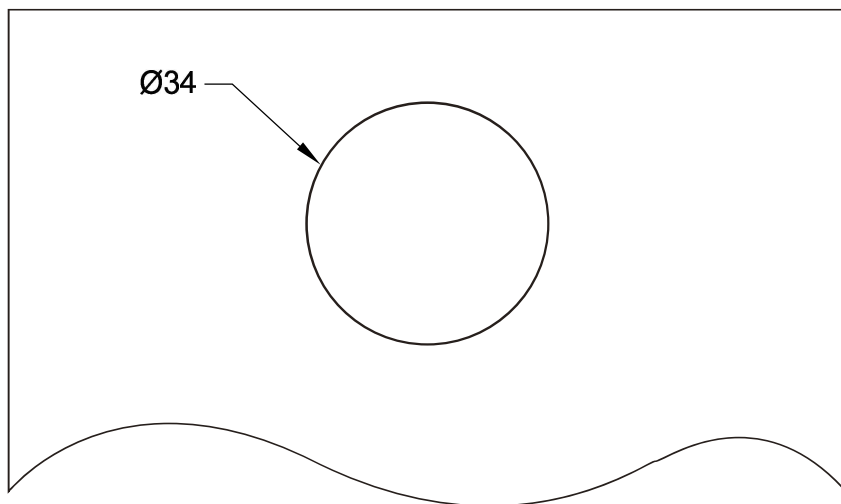
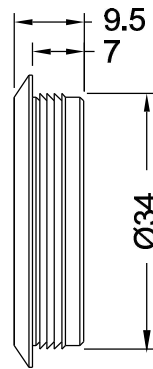
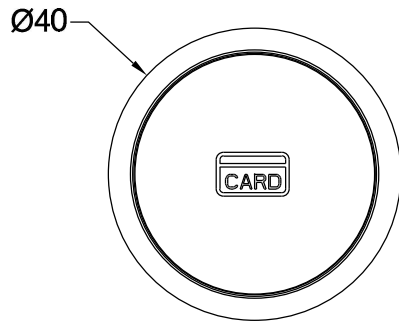
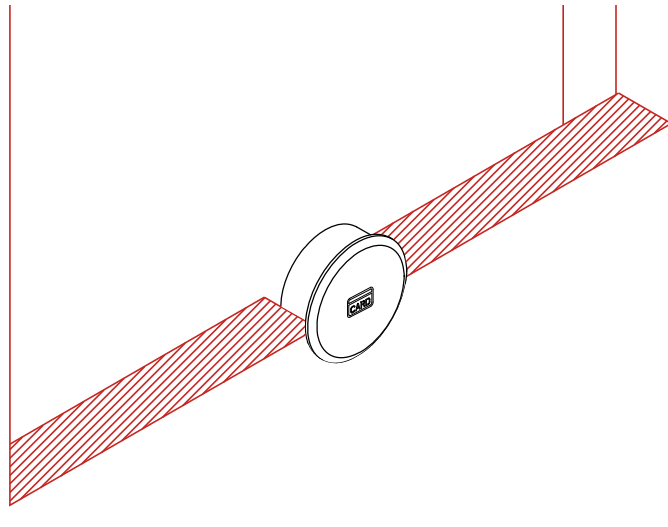


BENZOVILLE  
BY UNIQUE INNOVATIONS



# INSTALLATION DIAGRAM

## FT-BK100



UNIT:mm